



# Capability & Industry Experience

# Presentation Overview

Who

- Who we are?

What

- What do we do?

Why

- Why do we do it?

Success

- Our industry experience and project awards.

# Who are SSI?



Waste  
Energy  
Water

**Engineers  
&  
Project Managers**

Engineering  
Ethics  
Environment

***“we inspire and empower our clients to push the boundaries of sustainability to create great things”***

# What do we do?

Asset &  
Maintenance  
Management

Design,  
Construction  
Management &  
Commissioning

Efficiency Audits  
& Cleaner  
Production  
Assessments

Environmental  
Compliance &  
Licensing

Master Planning

Plant  
Assessments &  
Optimisation

Sustainable  
Resource  
Management

Risk Assessments  
(HACCP,  
HAZOP & FMEA)

# Asset & Maintenance Management

- Management systems;
- Operation & Maintenance (O&M) Manuals;
- Standard Operating Procedures (SOP);
- Risk assessments;
- Computerised Operation & Maintenance Systems (COMS); and
- Remote monitoring & maintenance.



**Detect**

**Compile**

**Schedule**

**Notify**

**Manage**

**Record**

**Report**

# Design, Construction Management & Commissioning

- Construction design, management and commissioning of:
  - Drinking water treatment plants;
  - Wastewater treatment plants;
  - Stormwater systems;
  - Renewable energy systems; and
  - Solid waste management systems.

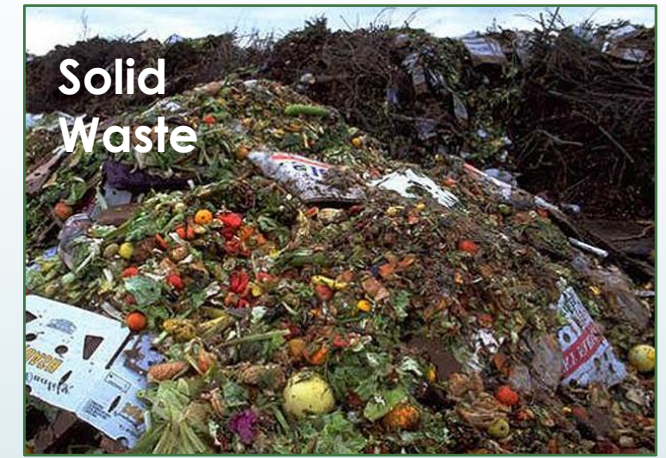
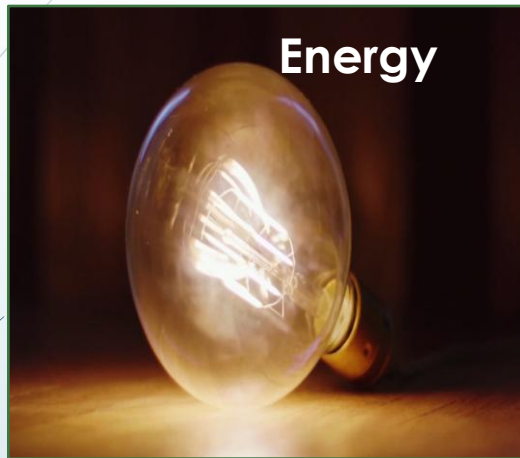




# Sustainable Resource Management

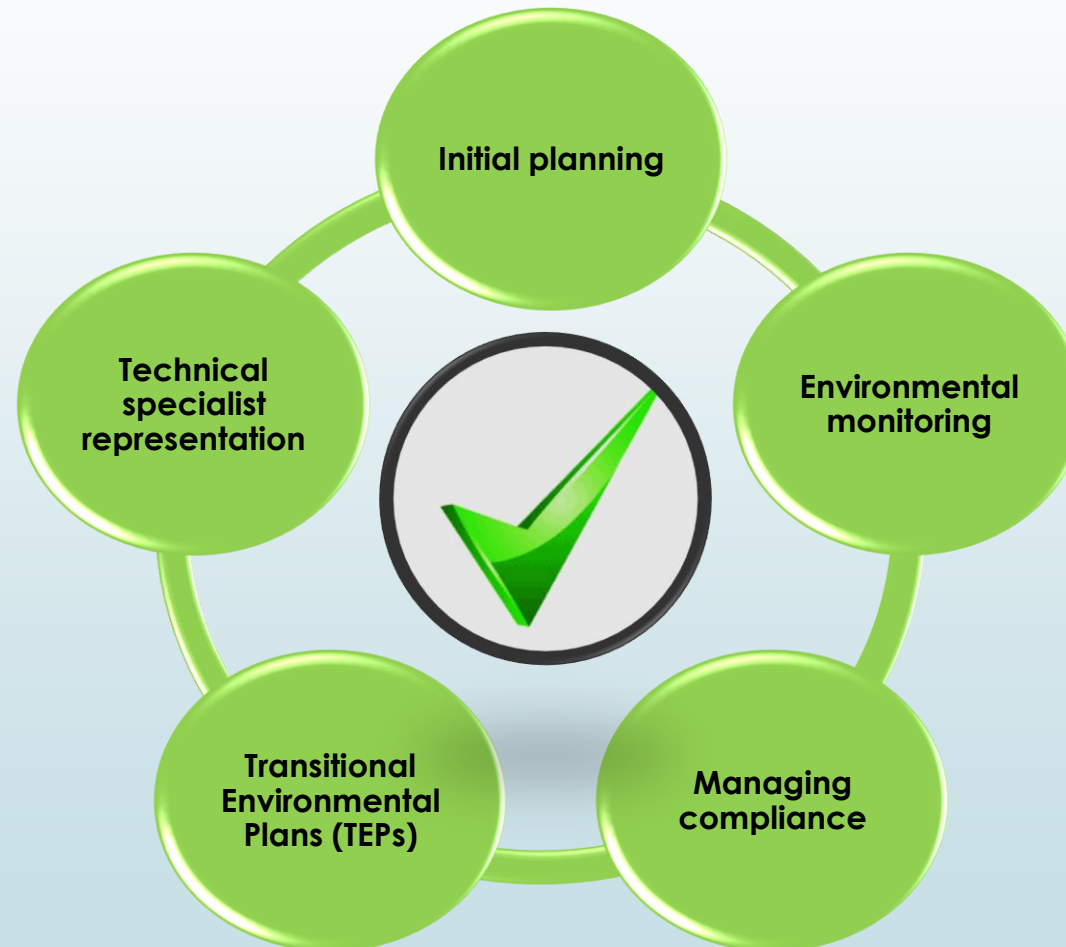


# Efficiency Audits & Cleaner Production



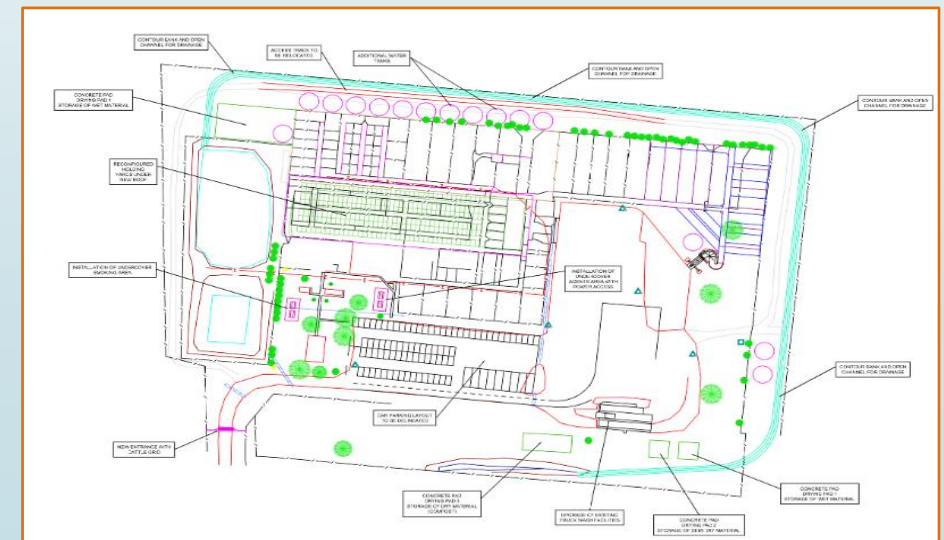


# Environmental Compliance & Licensing



## Solid waste management

## Future proofing



# Plant Assessment & Optimisation

## Existing Plant Assessment

- Overall plant performance assessment;
- Equipment performance assessment; and
- Optimisation.

## Feasibility Studies

- For proposed developments;
- Identify and assess risks; and
- Ensure product quality.



**Prolong a plants life with  
minimal modification**



# Risk assessments (HAZOP, HACCP & FMEA)

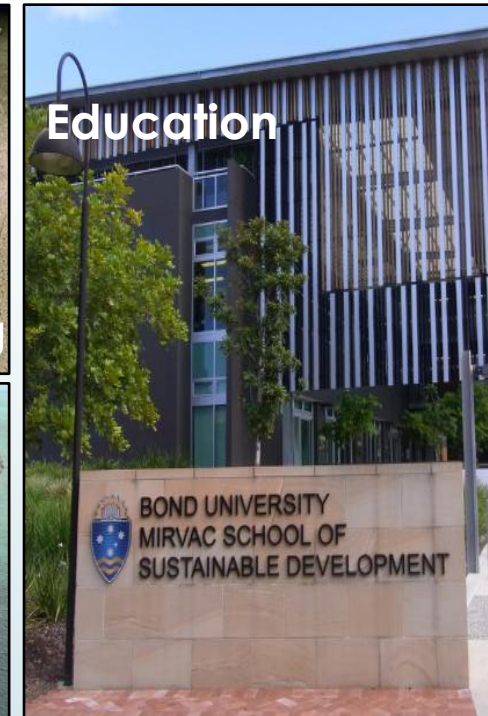
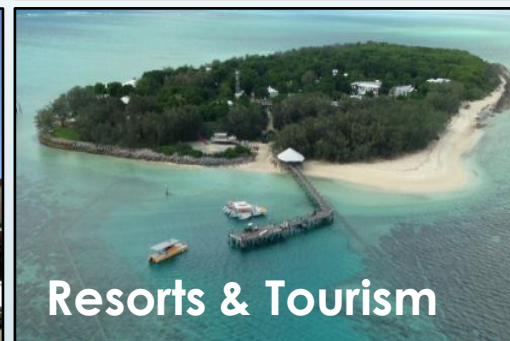
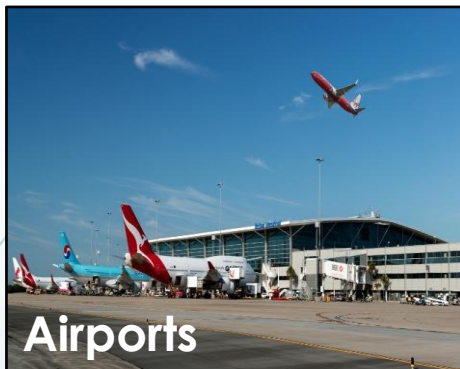




# Why do we do it?

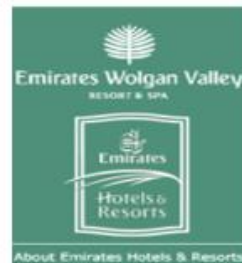


# Our Industry Experience





# Our Clients



# Airports

## Brisbane Airport Corporation (BAC)

### Services provided

Plant Assessment &  
Optimisation

Efficiency Audits

Design Construction  
Management &  
Commissioning

Master Planning

Sustainable Resource  
Management

Licensing





# Commercial & Retail

## The Concourse Chatswoods

### Services provided

Plant Assessment & Optimisation

Efficiency Audits

Design Construction Management & Commissioning

Master Planning

Sustainable Resource Management

Licensing

Risk Assessment

Asset & Maintenance Management



# Education Sector

## Bond University Mirvac School of Sustainability

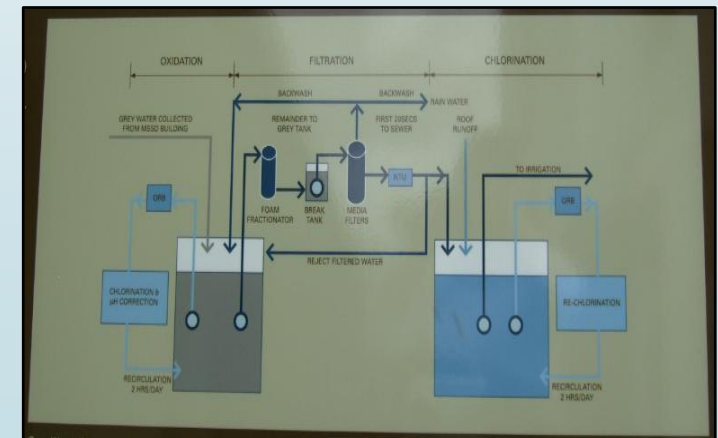
### Services provided

Efficiency Audits

Design  
Construction  
Management &  
Commissioning

Sustainable  
Resource  
Management

Licensing





# Resorts & Tourism

## Emirates Resort Wolgan Valley

### Services provided

Asset & Maintenance  
Management

Plant Assessment &  
Optimisation

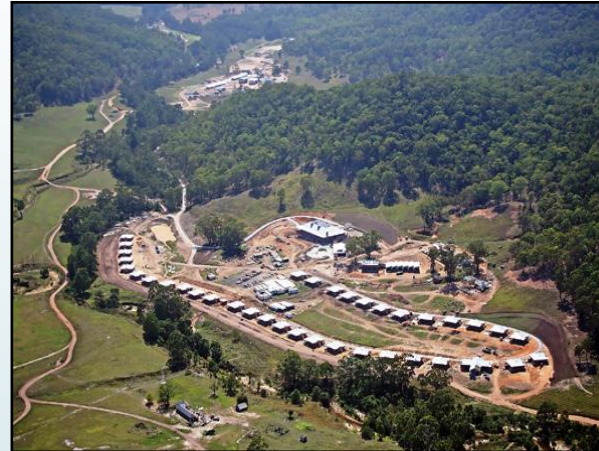
Master Planning

Efficiency Audits

Design Construction  
Management &  
Commissioning

Sustainable Resource  
Management

Licensing



# Mining, Oil & Gas Exxon Mobil

## Services provided

Asset & Maintenance  
Management

Plant Assessment &  
Optimisation

Master Planning

Design Construction  
Management & Commissioning

Sustainable Resource  
Management





# Project Awards



## Brisbane Airport Corporation

- Awarded “**The best water management in the world**” at the 2008 International Water Association Awards in Vienna; and
- Awarded Healthy Waterways 'Sustainable Water Management' in 2014.



## Currumbin Ecovillage

- Received more than twenty state and national awards in recognition of their sustainable development; and
- Awarded the Prix d'Excellence award “**The Worlds Best Ecovillage**”.



## The Concourse Chatswood

- Awarded “**Environmental Excellence Award**” in 2012.



## Emirates Resort Wolgan Valley

- The world's first CarboNZero certified resort.